

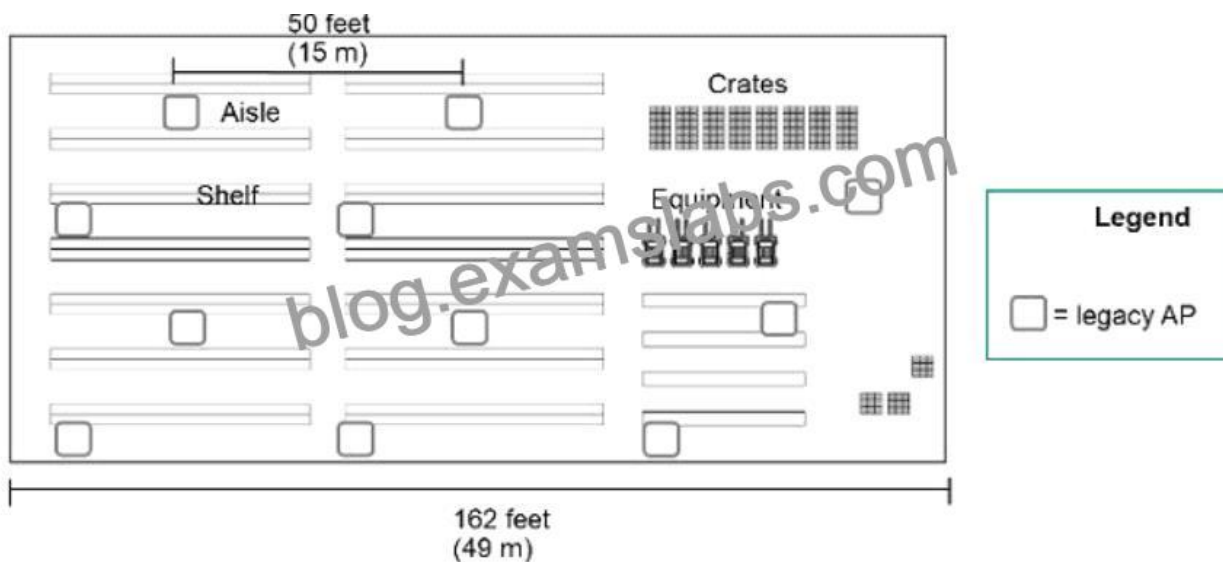
Authentic HPE6-A80 Dumps - Free PDF Questions to Pass [Q30-Q48]



Authentic HPE6-A80 Dumps - Free PDF Questions to Pass [Q30-Q48]

Authentic HPE6-A80 Dumps - Free PDF Questions to Pass
Guaranteed Accomplishment with Newest Nov-2022 FREE HPE6-A80

NO.30 Refer to the exhibit.



The exhibit shows the current AP deployment In a warehouse that stores frozen food goods:

- * APs are mounted on the ceiling, which is 15 feet (4.6 m) high.
- * Shelves are 12 feet (3.7 m) high and are typically fully stocked.

This customer indicates that their current wireless performance is inadequate.

What should the network architect include in the new solution to resolve this issue?

- * APS deployed on the ceiling in the same current locations, out with dual 5GHz radios
- * APs deployed on the ceiling in each aisle, due to the high absorption between aisles
- * APs deployed with directional antennas on the ceiling, due to the high 15-foot callings
- * APs deployed with directional antennas and a hybrid wall-mount, ceiling-mount design

NO.31 The architect plans to recommend an upgrade to Aruba CX switches

What is one requirement for the new solution that justifies this recommendation?

- * the requirement to support secure IPsec tunneling at the aggregation layer
- * the requirement to support larger ARP tables at the aggregation layer
- * the requirement to support smart Rate at the access layer
- * the requirement to support tunneled-node at the access layer

NO.32 A customer requires new MCs for a large multi-site network with about 600 AP-535S ana 30,000 wireless clients. The customer requires redundancy for the MCs, with each MC being able to handle the full toad in a failover situation The network should be able to sustain the loss of a controller with stateful failover within seconds. It should be able to undergo software upgrades without downtime.

The architect has recommended two 7240XM MCs. The customer points out that 7220 MCs can support their requirements and wonders why the architect recommended me 7240XMS.

What should the architect explain?

- * The 7240XM MCs have better redundant power supplies and fan tray component capabilities than 7220 MCs.
- * The 724QXM MCs can support full CPsec tunnels with this number of APs. while the 7220 MCs cannot.
- * The 7240XM MCS provide a higher number of concurrent GRE tunnels to support 600APs with MCS in L2 clustering.
- * The 7240XM MCs are required to support the large number of wireless clients in this network

NO.33 A customer has critical wired endpoints. However, each endpoint has a single Ethernet connection to the network. The customer wants redundancy in the switch access layer to minimize the chances that an endpoint will lose this connection The architect plans to deploy two Aruba CX 6405 switches in the closet.

Which plan provides the greatest redundancy for this scenario?

- * The 6405 Switches are in a VSF fabric, so the individual switches do not need redundant components.
- * The 6405 switches are in a VSX fabric, and each has a redundant management module but not a redundant power supply.
- * The 6405 switches are not in a vsF fabric, and have redundant power supplies but not redundant management modules.
- * The 6405 switches are not in a VSX fabric, and have redundant power supplies and redundant management modules.

NO.34 Refer to the exhibit.

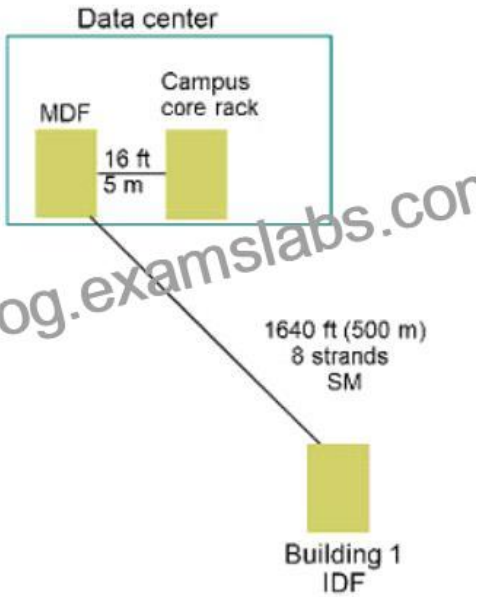


Exhibit: A49.01114316-102

The architect has determined that this building requires two 10GPE links to the data center.

What is the correct transceiver type for the links?

- * 3FP+ LRM with mode conditioning
- * SFP+ SR
- * SFP+ LRM
- * SFP+ LR

NO.35 Refer to the exhibit.

Line#	Part Number	Description	Manufacturer	Unit Price	Quantity	Total	Price List
1.0	JW744A	Aruba 7210 (US) 4p 10GBase-X (SFP+) 2p Dual Pwr (10/1...	Hewlett Packard Enter...	\$17,045.00	2	\$35,690.00	USA Price List (USD)
1.1	H30R1E	Aruba 1Y FC NBD Exch 7210 Controller SVC [for JW744A]	Hewlett Packard Enter...	\$2,618.00	2	\$5,236.00	USA Price List (USD)
1.2	JW657A	Aruba PSU-350-AC 7200 Series 53500-24T 500W 1U 10...	Hewlett Packard Enter...	\$520.00	2	\$1,040.00	USA Price List (USD)
1.3	JW124A	PC AC NA North America AC Power	Hewlett Packard Enter...	\$5.00	4	\$20.00	USA Price List (USD)
2.0	JZ337A	Aruba AP-535 (US) Unified AP	Hewlett Packard Enter...	\$1,570.00	398	\$624,860.00	USA Price List (USD)
2.1	H66E5E	Aruba 1Y FC NBD Exch AP 535 SVC [for JZ337A]	Hewlett Packard Enter...	\$66.00	398	\$26,268.00	USA Price List (USD)
2.2	Q9069A	AP-MNT-8 AP Mount bracket 10-pack B [split order]	Hewlett Packard Enter...	\$205.00	39.8	\$8,159.00	USA Price List (USD)
3.0	JY791A	Aruba MM-HW-1K Mobility Master 1000 AP HW Appliance	Hewlett Packard Enter...	\$18,895.00	1	\$18,895.00	USA Price List (USD)
3.1	H66E5E	Aruba 1Y FC NBD Exch MM-HW-1K Mob1000SVC [for JY79...	Hewlett Packard Enter...	\$2,779.00	1	\$2,779.00	USA Price List (USD)
3.2	JW471AAE	Aruba LIC-DNT Enterprise (LIC-AP LIC-PSF LIC-RFP and LIC...	Hewlett Packard Enter...	\$300.00	400	\$120,000.00	USA Price List (USD)
3.3	H2W03E	Aruba 1Y FC 24x7 License On Bundle SVC [for JW471AAE]	Hewlett Packard Enter...	\$45.00	400	\$18,400.00	USA Price List (USD)
4.0	JZ337A	Aruba AP-535 (US) Unified AP	Hewlett Packard Enter...	\$1,570.00	2	\$3,140.00	USA Price List (USD)
4.1	H50E5E	Aruba 1Y FC NBD Exch AP 535 SVC [for JZ337A]	Hewlett Packard Enter...	\$66.00	2	\$132.00	USA Price List (USD)
4.2	R3116A	AP-MNT-8 AP mount bracket individual B: suspended ceiling...	Hewlett Packard Enter...	\$33.00	2	\$66.00	USA Price List (USD)
Quote Total						\$864,670...	

A customer needs to create a proposal for a full wireless solution for a customer. The customer has indicated that the MCs will connect to Aruba CX Switches at the core and the APs will connect to PoE-i- switches at the edge. The customer requires that the wireless solution support at least 50 Mbps concurrently per AP. The architect has created a BOM for a Mobility Master (MM), two MC 7210s, and 400 AP-535S. The exhibit shows this BOM.

Which components has the architect forgotten?

- * SFP+ transceivers for the MC connections
- * Smart Rate PoE+ injectors for the APs
- * Mounting Kits for the MOs and MM
- * Sufficient Enterprise licenses for the APs on both MCs

NO.36 A customer has multiple, very small branch sites that require just one or two APs each. The office has a local Internet connection, but all of the traffic is destined To the corporate data center, which has an Aruba wireless solution.

Which branch office solution best meets the customer needs?

- * RAPs and no branch office controllers
- * IAPs and 7005 branch office controllers with an 3D-WAN license
- * CAPS and 7005 branch office controllers
- * RAPs and 7005 branch office controllers with an. SD-WAN license

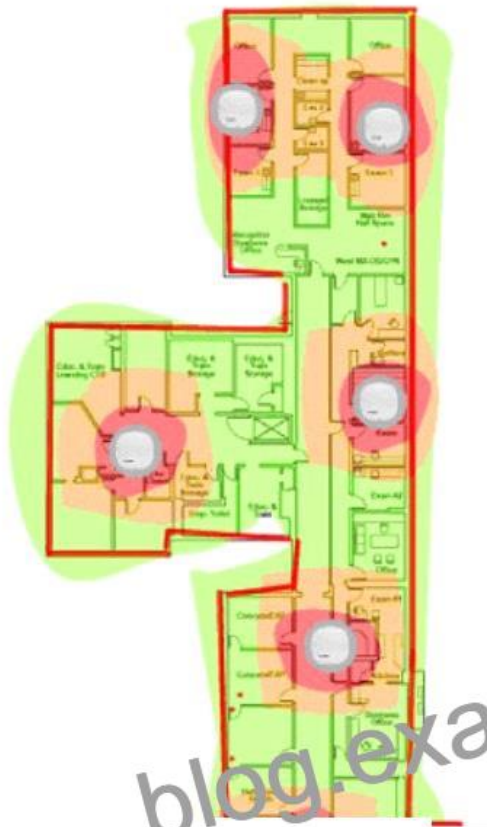
NO.37 What is one piece of additional information architects should obtain from the customer before they design the wireless solution?

- * the power requirements for the wireless IoT devices and security cameras
- * the authentication and encryption capabilities for IoT devices and security cameras
- * the distance between the locations where cameras will be installed and the wiring closet on each floor
- * the average number of users per IoT device

NO.38 What is one additional benefit trial Foundation Care gives beyond ire included warranty in Aruba products?

- * Next Business Day Snipping
- * unlimited 24×7 access to TAG and online support
- * business hour prone support for hardware issues
- * installation and getting started services

NO.39 Refer to the exhibit.



Floor 1

Properties View Edit

Devices

- APs

Overlays

- Heatmap
 - Speed
 - Voice

Floorplan Features

- Labels
 - Origin
 - Regions
- Walls


Signal Cutoff: -65 dBm

Frequencies: 5 GHz 2.4 GHz

Floors: Current Above Below

Show Overlay as Grid?

Legend

-  = -45 dBm
-  = -55 dBm
-  = -65 dBm



A hospital needs an upgrade to 802.11ax for its wireless network. The wireless network supports:

* wireless medical devices

- * medical staff voice communicators
- * laptops in nurse stations
- * medical staff tablets
- * visitor and patient personal devices.

All of these devices support both the 2.4GHz and 5GHz band. Assuming about a max throughput of 50 Mbps per AP; the hospital would like. The architect has used VisualRF to plan the AP placement on one of the floors, which the hospital expects will need to support about 800 users to deploy APs in stairwells between floors.

How well does the plan meet the requirements?

- * The current AP placement meets coverage requirements, but does not meet capacity requirements.
- * The current AP placement meets the customer requirements in terms of coverage and capacity.
- * The current AP placement fails to account for the lead-lined walls that are common in patient and exam rooms.
- * The current AP placement fails to provide adequate signal for the voice communicators in several areas

NO.40 A network architect needs to plan quality of service (QoS) for a hospital network.

Which of these applications should receive the highest priority?

- * streaming IPTV in lobbies
- * cloud-based scheduling software
- * MRI image transfer
- * wireless voice communicator devices

NO.41 Refer to the exhibit.

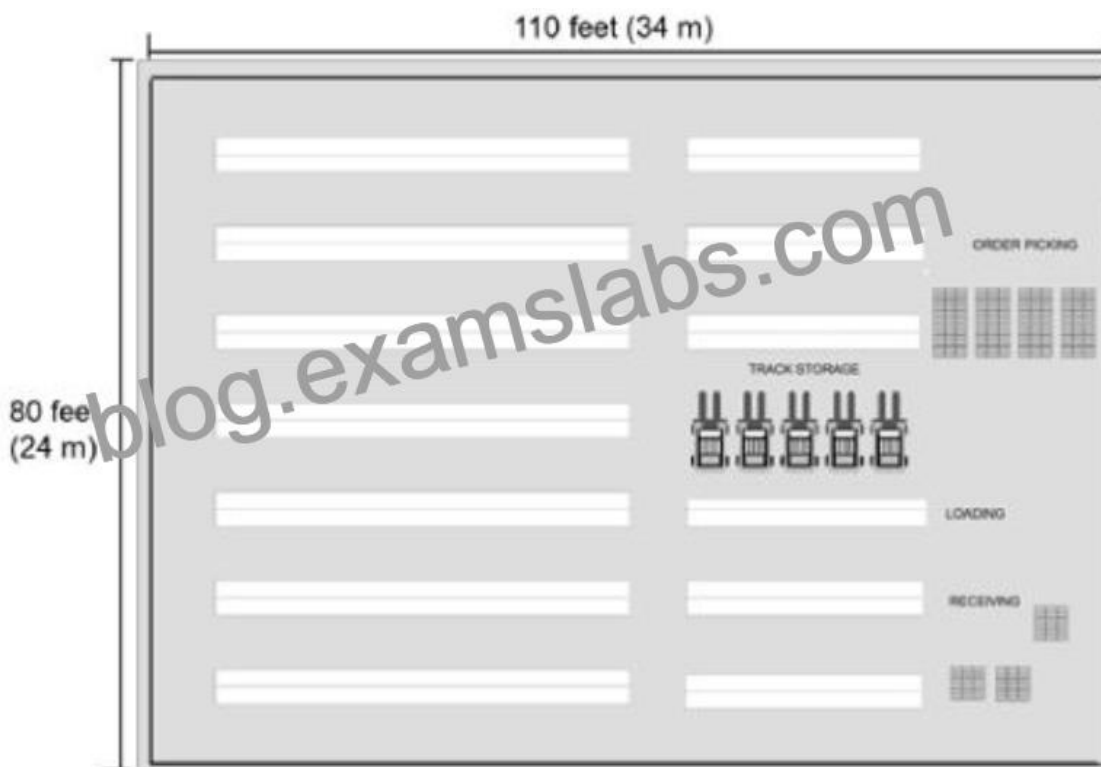
Line#	Part Number	Description	Manufacturer
1.00	JW736A	Aruba 7205 (US) 2-port 10GBASE-X (SFP+) Controller	Hewlett Packard Enter...
1.01	H3CW3E	Aruba 1Y FC NBD Exch 7205 Controller SVC [for JW736A]	Hewlett Packard Enter...
1.02	JW091A	SFP-10GE-SR 10GBASE-SR SFP+ 550nm Pluggable LC conn...	Hewlett Packard Enter...
2.00	JL323A	Aruba 2930M 400 8-port Rate PoE 1-slot Switch	Hewlett Packard Enter...
2.01	HT6U1E	HPE 2Y FC 15yr Aruba 2930MSRPOE SVC [for JL323A]	Hewlett Packard Enter...
2.02	JL086A	Aruba 370 34VDC 680W Power Supply	Hewlett Packard Enter...
2.03	JL086A	INCLUDED: Power Cord - U.S. localization	Hewlett Packard Enter...
2.04	JL315A	Aruba 2930 2-port Stacking Module	Hewlett Packard Enter...
2.05	JL082A	Aruba 3810M/2930M 4SFP+ MACsec Module	Hewlett Packard Enter...
2.06	J9150D	Aruba 10G SFP+ LC SR 300m MMF Transceiver	Hewlett Packard Enter...
3.00	J9821A	Aruba 5406R z12 Switch	Hewlett Packard Enter...
3.01	H1MT0E	HPE 3Y FC 24x7 Aruba 5406R z12 Switc SVC [for J9821A]	Hewlett Packard Enter...
3.02	U4832E	HPE Networks 54xx/82xx z1 Startup SVC [for J9821A]	Hewlett Packard Enter...
3.03	J9828A	Aruba 5400R 700W PoE+ z12 PSU	Hewlett Packard Enter...
3.04	J9828A	INCLUDED: Power Cord - U.S. localization	Hewlett Packard Enter...
3.05	J9993A	Aruba 8p 1G/10GbE SFP+ v3 z12 Mod	Hewlett Packard Enter...
3.06	J9150D	Aruba 10G SFP+ LC SR 300m MMF Transceiver	Hewlett Packard Enter...
3.07	J4858D	Aruba 1G SFP LC SX 500m MMF Transceiver	Hewlett Packard Enter...
3.08	J9996A	Aruba 2p 40GbE QSFP+ v3 z12 Mod	Hewlett Packard Enter...
3.09	JL308A	Aruba 40G QSFP+ LC BiDi 150m MMF 2-strand Transceiver	Hewlett Packard Enter...
4.00	JH234A	HPE X242 40G QSFP+ to QSFP+ 1m DAC Cable	Hewlett Packard Enter...

The network architect has created the 60M shown in the exhibit for a complete new wired and wireless solution for a customer. This solution the customer wants to discover and manage every component of the network in Airwave, including twins, MCS, APS, and switches.

How many AirWave licenses does the architect need to add?

- * 30
- * 222
- * 7122
- * 6930

NO.42 Refer to the exhibit.



This warehouse has the dimensions shown in the exhibit. The warehouse is 20 feet (6 m) high up to a steel railing on the ceiling. The shelves are about 16 feet (5m) high, and they hold large containers filled with fluid and metal equipment.

The customer needs consistent wireless coverage throughout the warehouse, mostly to support the tablets that employees use to run Inventory tracking and other applications. The warehouse staff works in shifts of 20.

The architect has selected AP-515S. About how many APs should the architect propose?

- * about 13-16
- * about 23-32
- * about 6-8
- * about 6-4

NO.43 A hospital needs an upgrade to 802.11ax for its wireless network, which needs to provide complete coverage. The hospital has a concrete exterior and uses drywalls for all of the interior walls with a few exceptions as mandated for safety. The building has 10-foot (3 m) ceilings.

The hospital prefers to avoid the deployment of APs in rooms if possible. Exceptions include reception areas and lounges.

The wireless network must support wireless medical devices, voice communicators for medical staff, laptops in nurse stations, medical staff tablets, and visitor and patient personal devices. All of these devices support both the 2.4GHz and 5GHz band.

The exhibits below show one wing of one floor of the hospital. This wing is about 25,000 square feet (2,300 sq. m). The unlabeled rooms along the bottom of the wing are patient rooms; other rooms such as lounges and the MRI room are labeled. This area has:

* up to 50 concurrent patients and visitors, who might have up to two devices

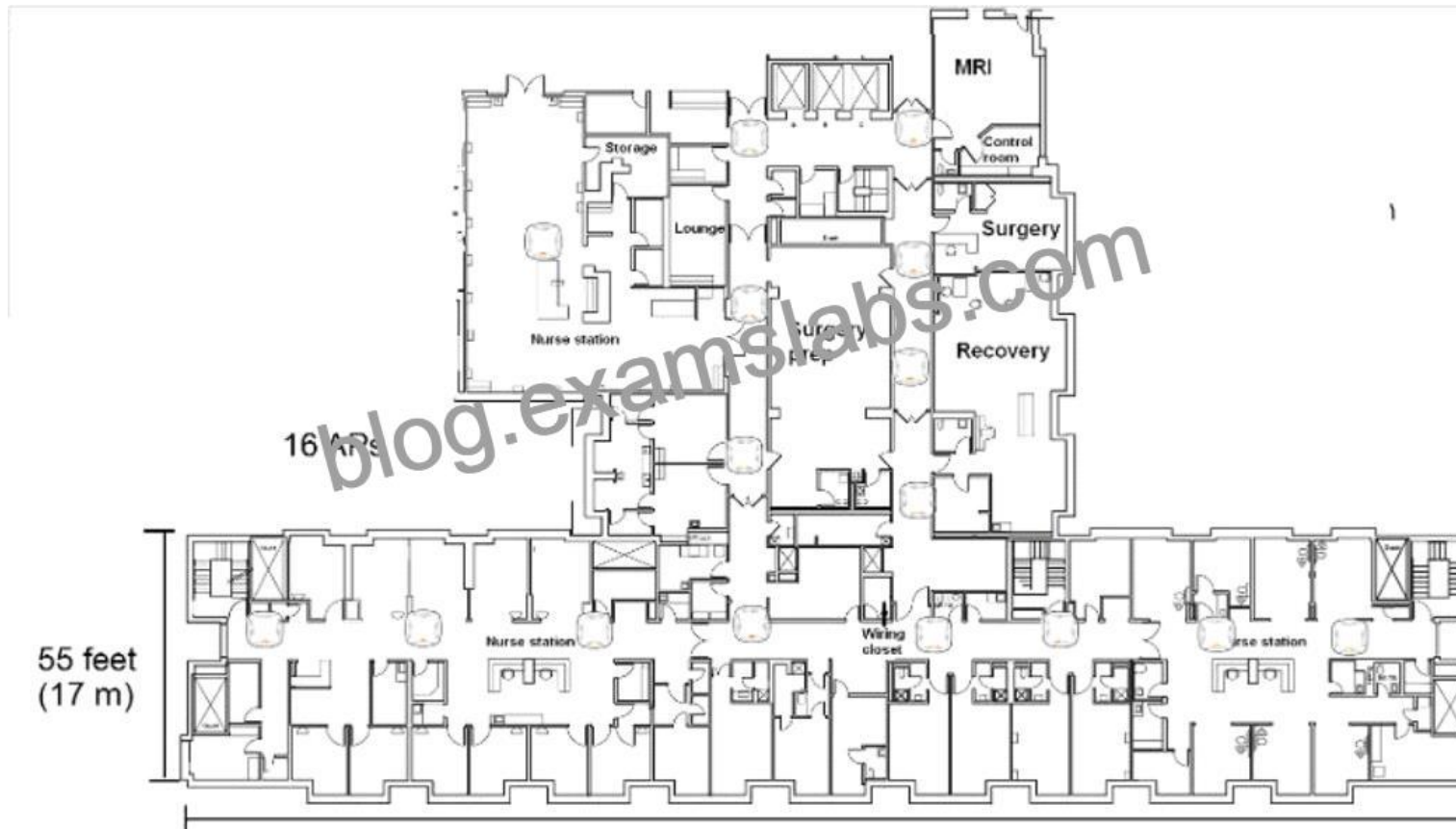
* 40 concurrent staff members, who might have up to three devices

* about 200 medical and other types of wireless devices

The architect has already planned to place APs in stairwells on another floor.

Which AP plan for this wing of this floor meets the customer needs?

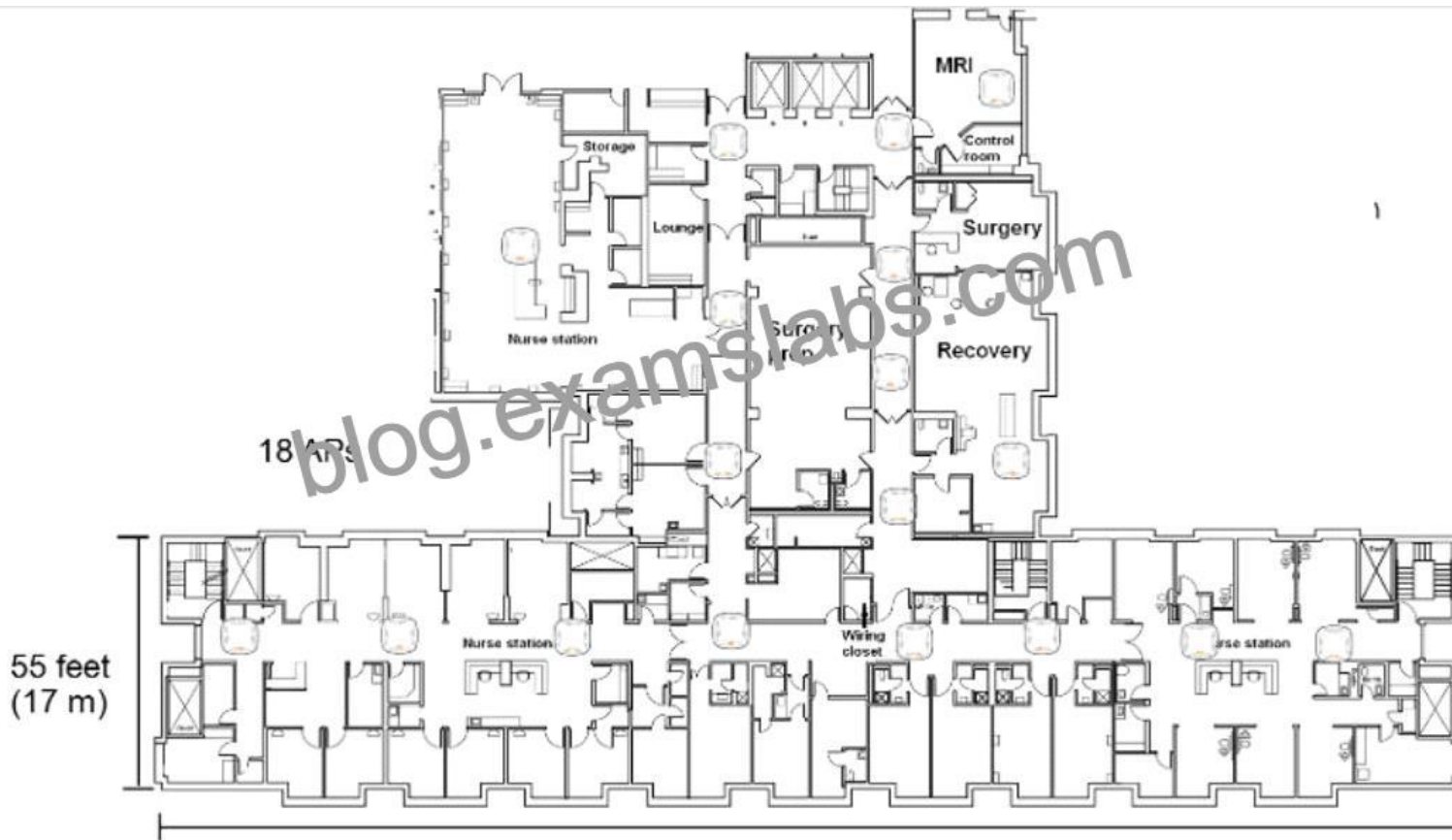
A)



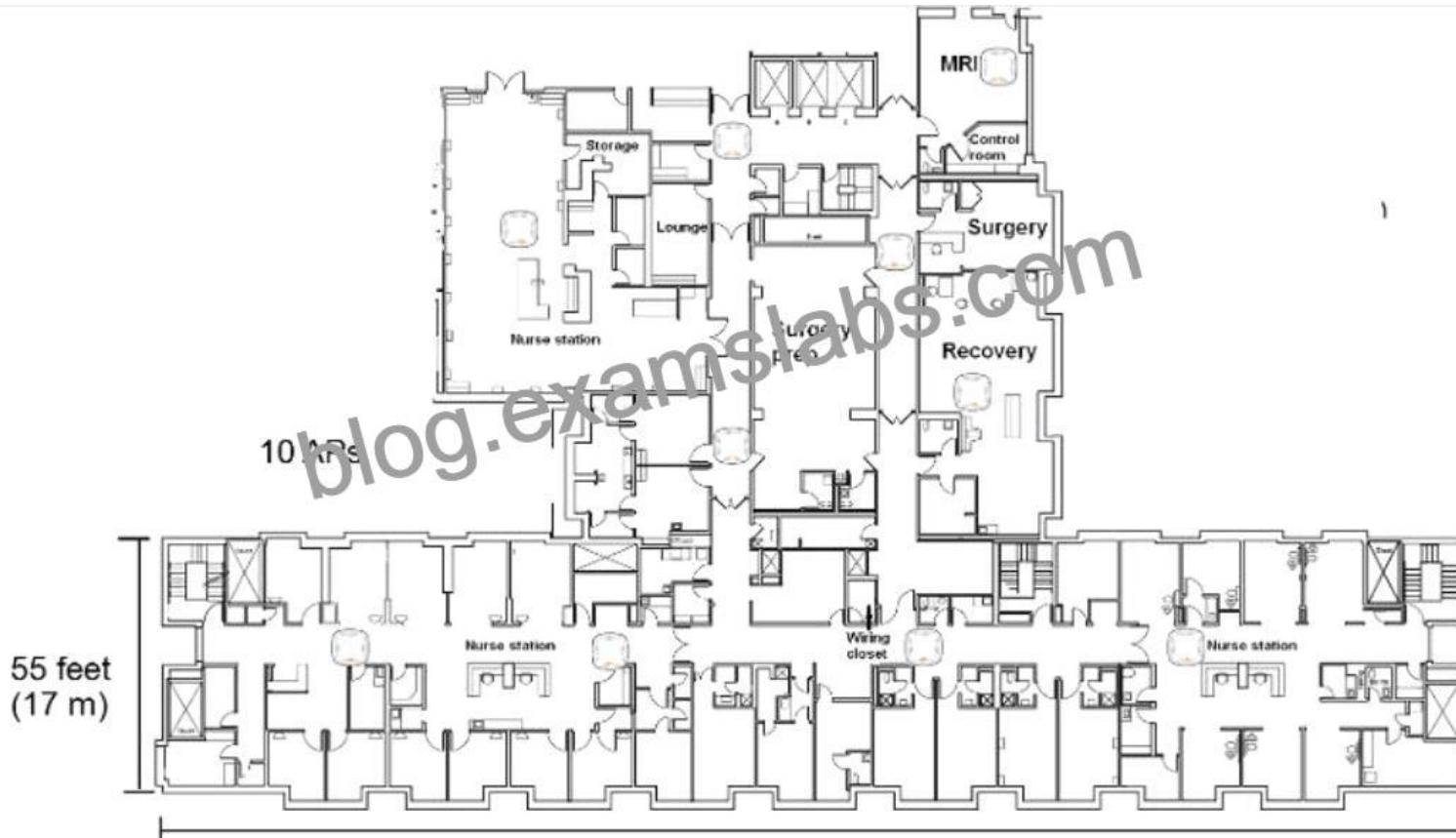
B)



C)



D)



- * Option A
- * Option B
- * Option C
- * Option D

NO.44 A company has several remote sites that operate more or less autonomously. Each site has its own local services and Internet connection. However, the company does have a main office with a few centralized resources that the company would like to make available to remote office employees over the Internet connection. Sites range in size and require between 10 and 20 APs.

The customer requires the most cost-effective solution that meets the requirements.

Which solution should the architect recommend for each remote site?

- * Campus APs (CAPs) with a local MC that has an SD-WAN license
- * Remote APs (RAPs) with IPsec tunnels to a main office MC
- * an IAP cluster with an IPsec tunnel to a main office MC
- * Campus APs (CAPs) with CAPSec control channels to a main office MC

NO.45 A customer has multiple medium and large branch sites, each of which requires between 5 and 16 APs and supports between 200 and 600 wireless clients. Every branch site has an Internet connection, which it uses to reach the central data center. The customer would prefer the WAN links to be optimized in the solution.

Different use cases require SSIDs for tunneled traffic from remote sites to central location, traffic that must remain local on the remote site, and traffic which would need to egress out from remote site Internet connection.

Which branch office solution best meets the customer needs?

- * IAPs with Aruba central
- * RAPs and branch office controllers
- * IAPs with branch office controllers
- * CAPs and branch office controllers

NO.46 Refer to the exhibit.

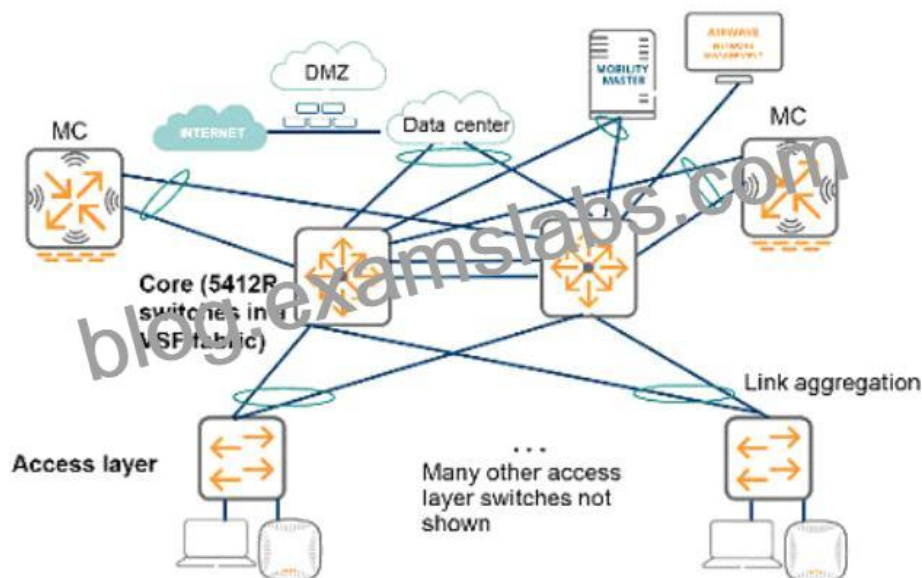


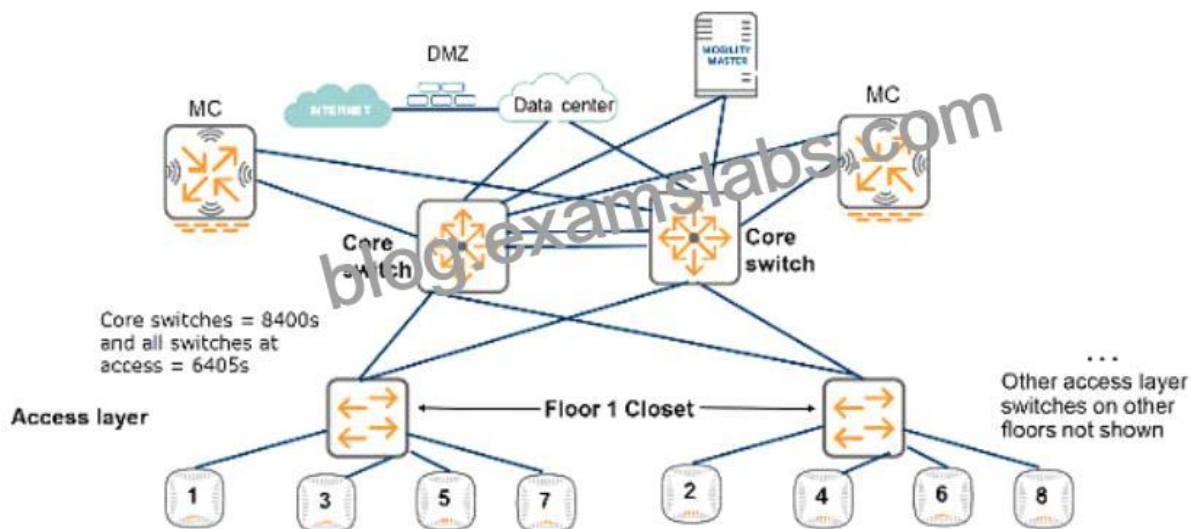
Exhibit: A49.01114316-12

The exhibit shows the design for an existing network. The customer intends to replace the current Core switches with two Aruba 8400 switches.

What are two points that the architect should ensure that the customer understands? (Select two.)

- * The 8400 switches do not support VSF.
- * The 8400 switches cannot be monitored by AirWave.
- * The 8400 switches run different software than the 5400R switches.
- * The 8400 switches have a smaller ARP table than the 5400R switches.
- * The 8400 switches are fixed port switches.

NO.47 Refer to the exhibit.



A customer needs to support resilient wireless services

What is one way that this design helps to minimize the impact of a failed access layer switch on these services?

- * The switches support Smart Rate and dual home AP connections.
- * The 8400s and G405s use Virtual Switching Extension (VSX) in core and access.
- * Each access layer switch has two redundant links to the core.
- * APs in the same area connect to different switches.

NO.48 A retailer wants to add a wireless network to its stores to provide guest access. The store has wired POS systems which the customer will now replace with wireless systems.

What is one important security action that the wireless solution supports to comply with PCI DSS?

- * Use test-practice, factory default settings for security settings and login credentials.
- * Implement TKIP encryption on the wireless network used by POS devices.
- * Impose mandatory clean up periods to delete records of user access to controllers
- * Enforce role-based access control on administrators who access controllers

HPE6-A80 Braindumps PDF, HP HPE6-A80 Exam Cram:

<https://www.examslabs.com/HP/Aruba-Certified-Design-Expert-ACDX/best-HPE6-A80-exam-dumps.html>