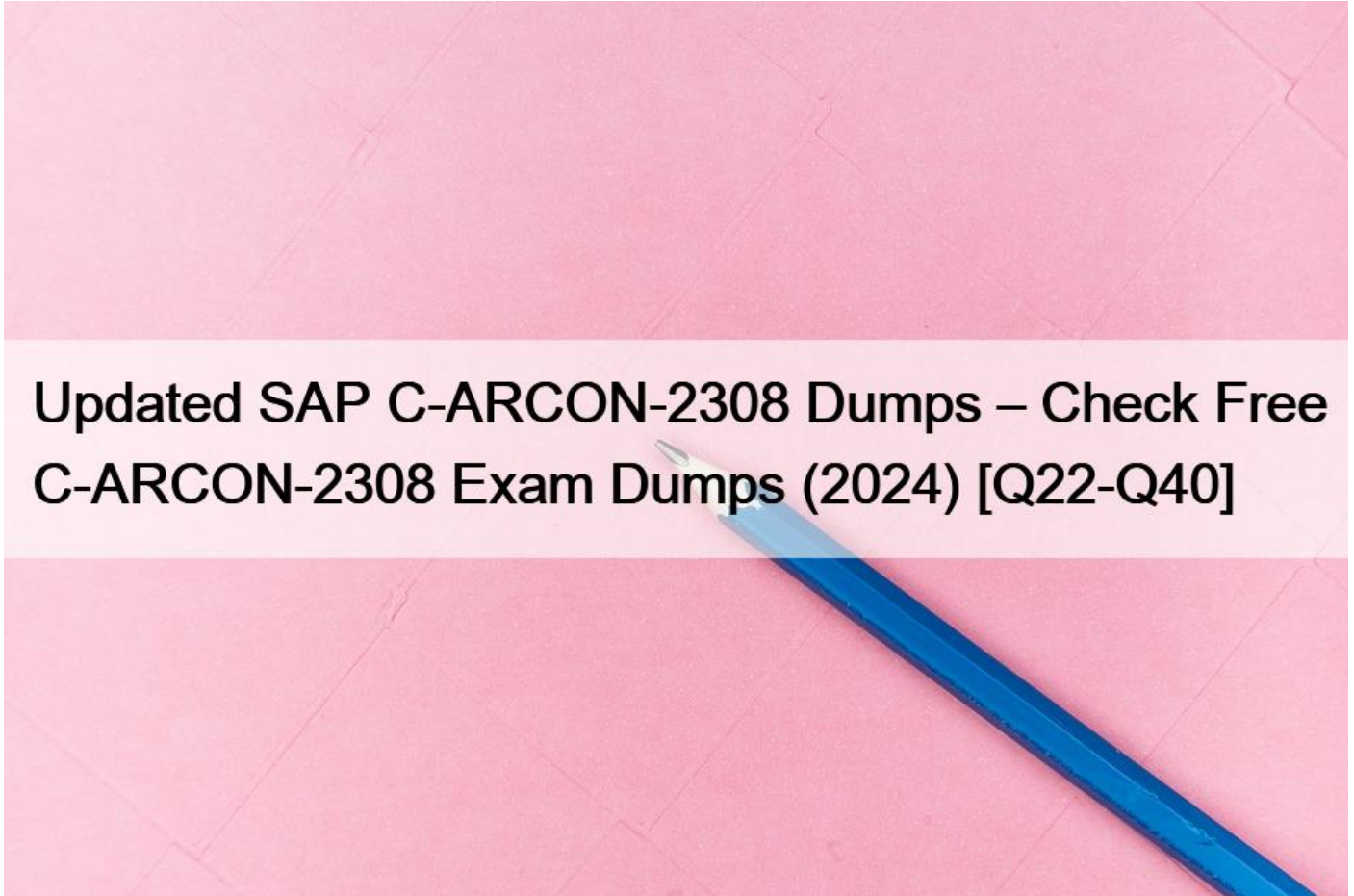


## Updated SAP C-ARCON-2308 Dumps ? Check Free C-ARCON-2308 Exam Dumps (2024) [Q22-Q40]



### Updated SAP C-ARCON-2308 Dumps &ndash; Check Free C-ARCON-2308 Exam Dumps (2024) Updated C-ARCON-2308 exam with SAP Real Exam Questions Q22. Contract Requests and Contract Workspaces

You are creating a new condition at the template level.

How do you use the expression type '&#8220;Reference to Condition&#8221;?&#8221;?

Note: There are 2 correct answers to this question

- \* To combine an existing condition
- \* To use values of an existing condition to define additional conditions
- \* To create multiple conditions in one expression
- \* To group newly-created conditions

#### Q23. SAP Ariba Contracts Configuration

What types of tasks are available in SAP Ariba Contracts?

Note: There are 3 correct answers to this question

- \* Administrative tasks
- \* Supplier tasks
- \* Approval tasks
- \* Review tasks
- \* Notification tasks

#### **Q24. Best Practices**

Which method is recommended when creating an approval task with approval rules?

- \* Create conditions before creating approval rules
- \* Add approvers before creating approval rules
- \* Add a chain rule before creating approval rules
- \* Create an Approver Lookup Table before creating approval rules

#### **Q25. Contracts Requests and Contract Workspaces**

How can a project owner delegate tasks to other users?

- \* Edit the task and change the Owner field
- \* On the Tasks tab, click Actions and select Delegate Tasks
- \* Add the users to a group with the Active Team Member role
- \* Click on the task and select Assign

#### **Q26. Deployment Methodology**

What is the maximum file size for the legacy contract load .zip file?

- \* 10 MB
- \* 1 GB
- \* 100 MB
- \* 250 MB

#### **Q27. SAP Ariba Contracts Configuration**

To which objects can visibility conditions be applied in contract workspace templates?

Note: There are 2 correct answers to this question

- \* Document folder
- \* Personally identifiable information
- \* Team member role
- \* Template

#### **Q28. Deployment Methodology**

Your customer requires a custom field where users will choose one or more items from a list of around 100 possibilities, each represented by a short name. Which field type should you use to represent this data?

- \* Flex master data
- \* Text single choice
- \* Multiline text
- \* Text multiple select

### Q29. Contract Authoring

For the system to display sections and clauses on Outline View using Enhanced Contract Authoring (ECA), styles must be applied in Microsoft Word document. Which Outline Level of the style is used for clauses?

- \* Heading
- \* List
- \* Comment Text
- \* Body Text

### Q30. Contract Requests and Contract Workspaces

Which types of contract requests are provided in SAP Ariba?

Note: There are 2 correct answers to this question

- \* Contract Request (External)
- \* Contract Request (Internal)
- \* Contract Request (Procurement)
- \* Contract Request (Sales)

### Q31. Deployment Methodology

Which of the following custom field types are supported?

Note: There are 2 correct answers to this question

- \* Flex master data single select
- \* Filtered data list
- \* Multiline text
- \* Text multiple select with hierarchical data

### Q32. Search and Reporting

What are the different views that you can pin on a dashboard with Prepackaged Reports?

Note: There are 2 correct answers to this question

- \* Spreadsheet
- \* Charts
- \* Pivot Table
- \* Spend cube

### Q33. SAP Ariba Contracts Configuration

Which access control settings can you apply to a contract workspace?

Note: There are 2 correct answers to this question

- \* Human Resources Information
- \* Legal Information
- \* Private to Team Members
- \* Public to Procurement Users

### Q34. Best Practices

When you are updating data in Data Import/Export, what does SAP Ariba recommend?

- \* Use the Update Only option only when you import the modified file
- \* Delete existing data first before importing modified data
- \* Only use an XML file to import the data
- \* Save an exported file for back up

### **Q35. Search and Reporting**

How can a report become visible on the dashboard?

Note: There are 2 correct answers to this question

- \* From a report, click save and add to content
- \* From a report, click export and add to dashboard
- \* From the dashboard, click the Configure Tabs (the wrench icon) and add content
- \* From a report, click the dashboard tab and add to dashboard

### **Q36. Deployment Methodology**

For which of the following purposes can you use the contract legacy load feature?

Note: There are 2 correct answers to this question

- \* Loading contracts for searching and reporting
- \* Importing historical spend data for analysis
- \* Mass editing existing contracts
- \* Receiving automated reminders

### **Q37. Contract Requests and Contract Workspaces**

Who has the ability to edit the Overview information in a Contract Workspace?

- \* Contract Owner and team members with the Active Team Member role
- \* Contract Owner and team members with the Observer Team Member role
- \* Contract Owner Only
- \* Contract Owner and team members with the Project Owner role

### **Q38. Procurement Knowledge**

When does a published contract have a Pending contract status?

- \* The effective date is in the future
- \* The contract documents need approval
- \* The required tasks have not been completed
- \* The agreement date is in the future

### **Q39. Contract Requests and Contract Workspaces**

You have created a contract workspace but are not seeing a document you expect to see. Why might this document not be visible?

Note: There are 2 correct answers to this question

- \* You answered a template question differently than for previous workspaces
- \* You entered incorrect header information when creating the contract workspace

- \* You have set the Documents View option to Quick Links instead of Full View
- \* The document validity period has expired and needs to be renewed

#### **Q40. Integration**

New releases of SAP Ariba Contracts may change the fields and format of data import/export tasks. Which of the following tools allows administrators to review and accept those changes?

- \* End Point Configuration
- \* Data Definition
- \* Integration Configuration
- \* Data Dictionary

**Actual C-ARCON-2308 Exam Recently Updated Questions with Free Demo:**

<https://www.examlabs.com/SAP/SAP-Certified-Application-Associate/best-C-ARCON-2308-exam-dumps.html>