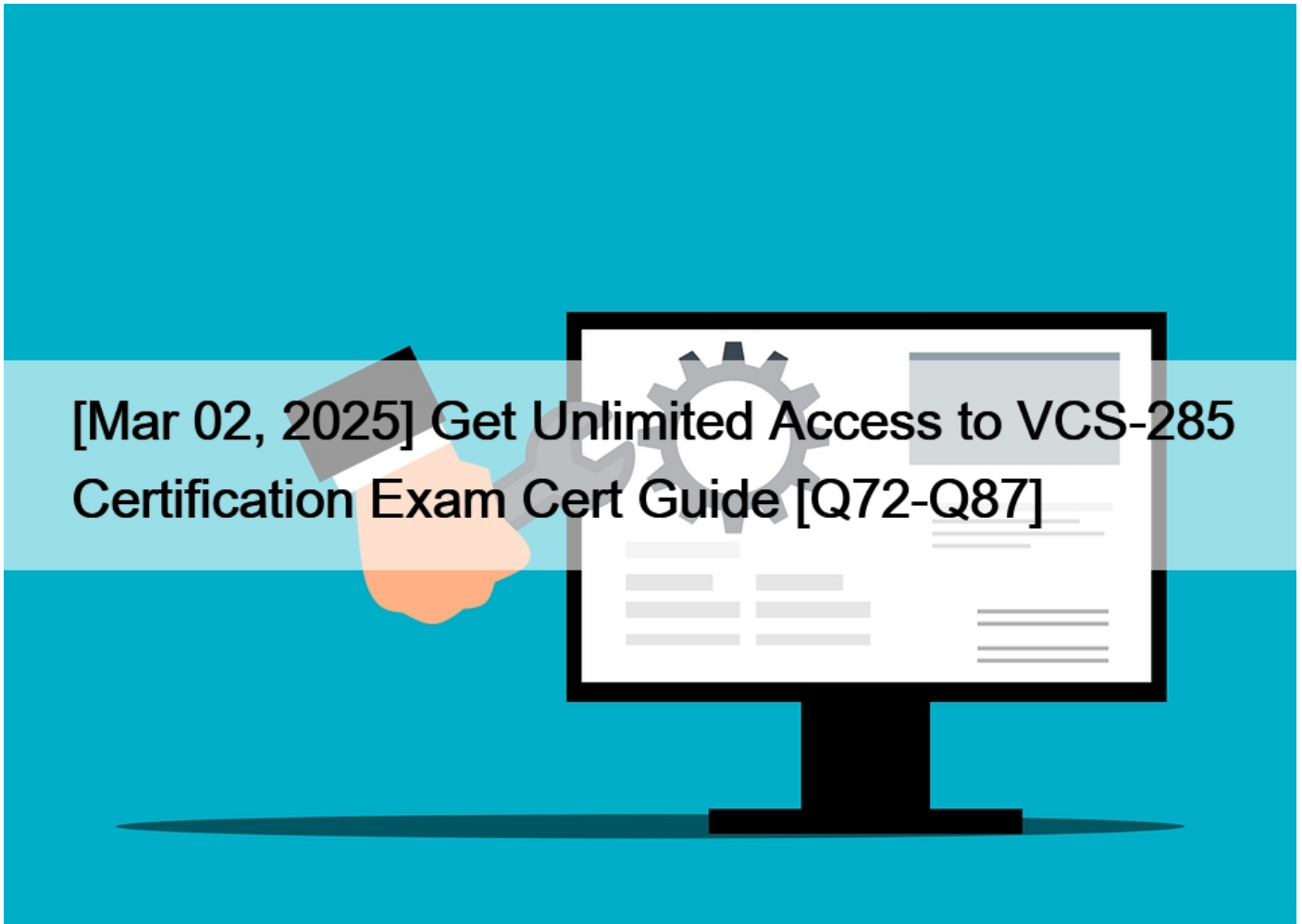


[Mar 02, 2025] Get Unlimited Access to VCS-285 Certification Exam Cert Guide [Q72-Q87]



[Mar 02, 2025] Get Unlimited Access to VCS-285 Certification Exam Cert Guide
Reliable Study Materials for VCS-285 Exam Success For Sure

NEW QUESTION 72

What is the name of the feature that lets you define different levels of access and permissions for NetBackup users and groups?

- * Role-based access control (RBAC)
- * Access control list (ACL)
- * User management (UM)
- * Security policy (SP)

NEW QUESTION 73

A NetBackup appliance is not restoring data from a specific backup file. What steps can be taken to troubleshoot the problem?

- * Check the backup file's permissions.

- * Check the appliance's logs for errors.
- * Contact Veritas Support for assistance.

NEW QUESTION 74

What is the name of the command that lets you verify the integrity of a backup image in NetBackup?

- * bpverify
- * bpimage
- * bpvalidate
- * bpcheck

NEW QUESTION 75

What is the minimum size of a file that can be deduplicated by NetBackup?

- * 1 KB
- * 8 KB
- * 64 KB
- * 128 KB

NEW QUESTION 76

Which feature is enabled after adding a master server to the Trusted Master Servers tab?

- * backup of clients in other master server domains
- * remote console to another master server
- * targeted Auto Image Replication
- * remote catalog backups

NEW QUESTION 77

Which of the following is NOT a task that can be performed using Appliance Shell Menu (CLISH)?

- * Creating users
- * Managing storage
- * Monitoring jobs
- * Troubleshooting problems

NEW QUESTION 78

Which tab allows an administrator to modify the factory default values of the Data Buffer and Deduplication parameters via the NetBackup Appliance Web Console?

- * Manage > Storage
- * Manage > Additional Servers
- * Manage > Host
- * Manage > Appliance Restore

NEW QUESTION 79

What is the difference between synthetic backups and True Image Restore (TIR) in NetBackup?

- * Synthetic backups create a full backup image from existing backups, while TIR restores files from the most recent backup image.
- * Synthetic backups restore files from the most recent backup image, while TIR creates a full backup image from existing backups.
- * Synthetic backups create a full backup image from existing backups, while TIR maintains a catalog of files and directories for

each backup image.

* Synthetic backups maintain a catalog of files and directories for each backup image, while TIR creates a full backup image from existing backups.

NEW QUESTION 80

An administrator has a NetBackup Appliance that failed to CALL HOME during an unexpected hard drive failure.

Which two reasons may have prevented CALL HOME from working? (Choose two.)

- * Call Home is set to disabled.
- * The MyVeritas Credentials are incorrect.
- * TELEMETRY_UPLOAD is disabled (Set to 'NO').
- * The Call Home Proxy settings are incorrect.
- * The factory installed license key is expired.

NEW QUESTION 81

An administrator has a Linux client that has a backup job failing with the following error message:

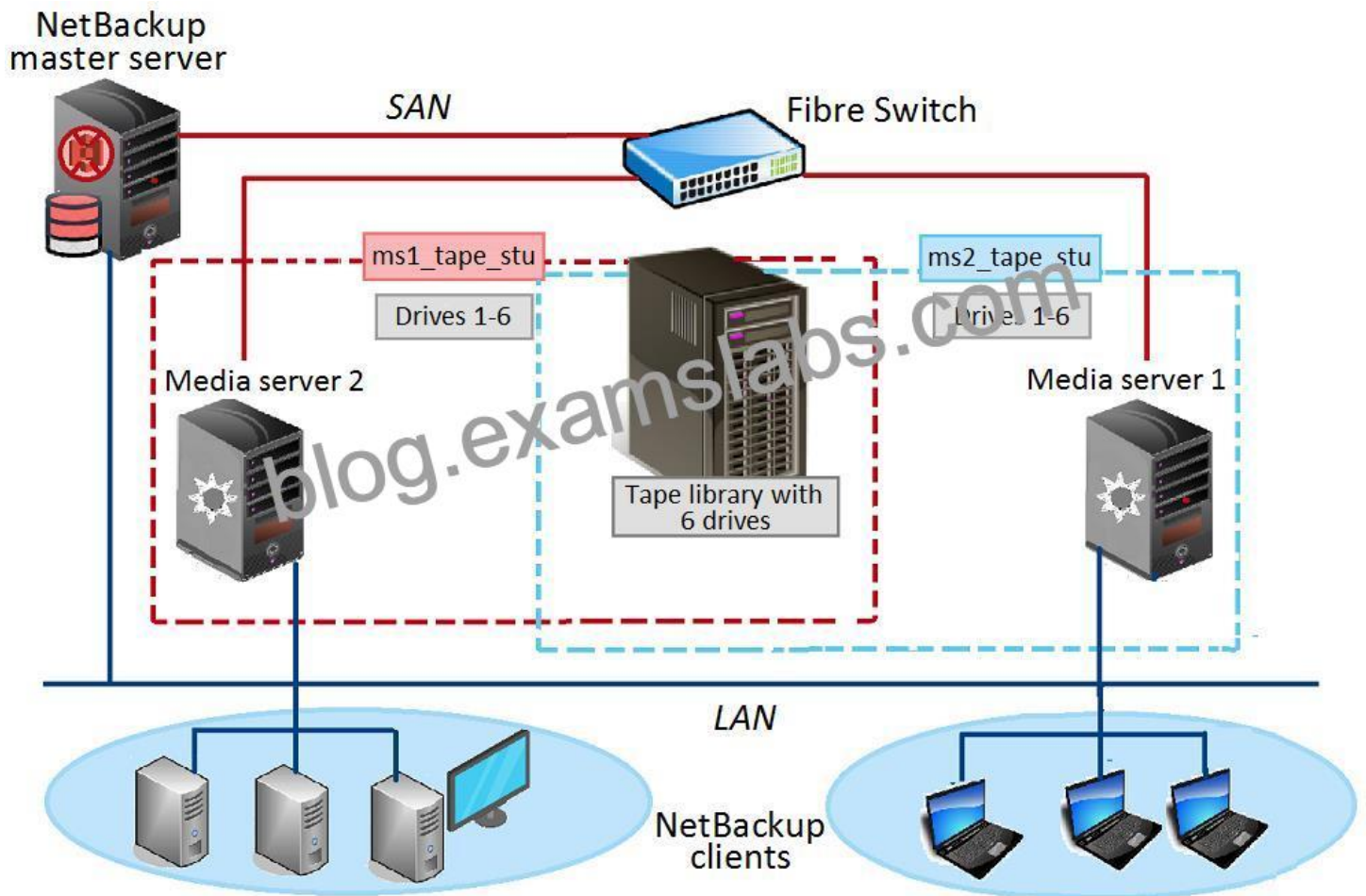
bpbrm Exit: client backup EXIT STATUS 41: network connection timed out

Which step should the administrator perform to ensure the backup job completes successfully?

- * check the firewall settings to ensure NetBackup ports are open
- * edit the 'Client read timeout' setting in the master server Host Properties
- * edit the 'Client connect timeout' in the master server Host Properties
- * add a SERVER entry for the media server in the client's bp.conf file

NEW QUESTION 82

Refer to the exhibit.



Two media servers, sharing a library with 6 tape drives, exist in the NetBackup environment displayed in the exhibit. Both weekly Full and daily Differential Incremental backups need to run for the clients and each schedule has a different retention period. Because of network topology, some clients back up to Media server 1 and some back up to Media server 2. The environment suffers from multiple status 96 failures during the backup window.

How can the administrator minimize the number of failures?

- * increase the 'Media unmount delay';
- * configure media multiplexing
- * enable backups to span tape media
- * enable media sharing

NEW QUESTION 83

What are the two commands that let you monitor NetBackup appliances using Appliance Shell Menu (CLISH)?

- * Monitor > Health and Monitor > Performance
- * Monitor > Status and Monitor > Alerts
- * Monitor > Logs and Monitor > Reports
- * All of the above

NEW QUESTION 84

What is the purpose of Storage Lifecycle Policies in NetBackup?

- * To configure backup policies
- * To manage cloud assets
- * To implement specialized backup solutions
- * To automate the movement of backup data between different storage tiers

NEW QUESTION 85

What is the purpose of the NetBackup 10.0 Release Notes?

- * To provide a list of new features and enhancements in the latest version of NetBackup.
- * To offer free training courses on how to use NetBackup.
- * To provide support for NetBackup users.
- * To list the prices of NetBackup licenses.

Explanation

(Explanation: The NetBackup 10.0 Release Notes provide a comprehensive list of new features, enhancements, and bug fixes in the latest version of NetBackup, enabling users to get up-to-date information on the product.)

NEW QUESTION 86

What is the purpose of NetBackup Compatibility Lists?

- * To provide a comprehensive list of supported operating systems, applications, and hardware for NetBackup.
- * To list the prices of NetBackup licenses.
- * To offer troubleshooting advice for NetBackup users.
- * To provide free training courses on how to use NetBackup.

Explanation

(Explanation: NetBackup Compatibility Lists provide a comprehensive list of supported operating systems, applications, and hardware for NetBackup, enabling users to ensure that their backup environment is compatible with NetBackup and avoid potential compatibility issues.)

NEW QUESTION 87

What are the two types of disk storage that NetBackup supports for backup data?

- * BasicDisk and AdvancedDisk
- * StandardDisk and PremiumDisk
- * SimpleDisk and ComplexDisk
- * BasicDisk and Media Server Deduplication Pool (MSDP)

New Veritas VCS-285 Dumps & Questions:

<https://www.examlabs.com/Veritas/Veritas-NetBackup/best-VCS-285-exam-dumps.html>